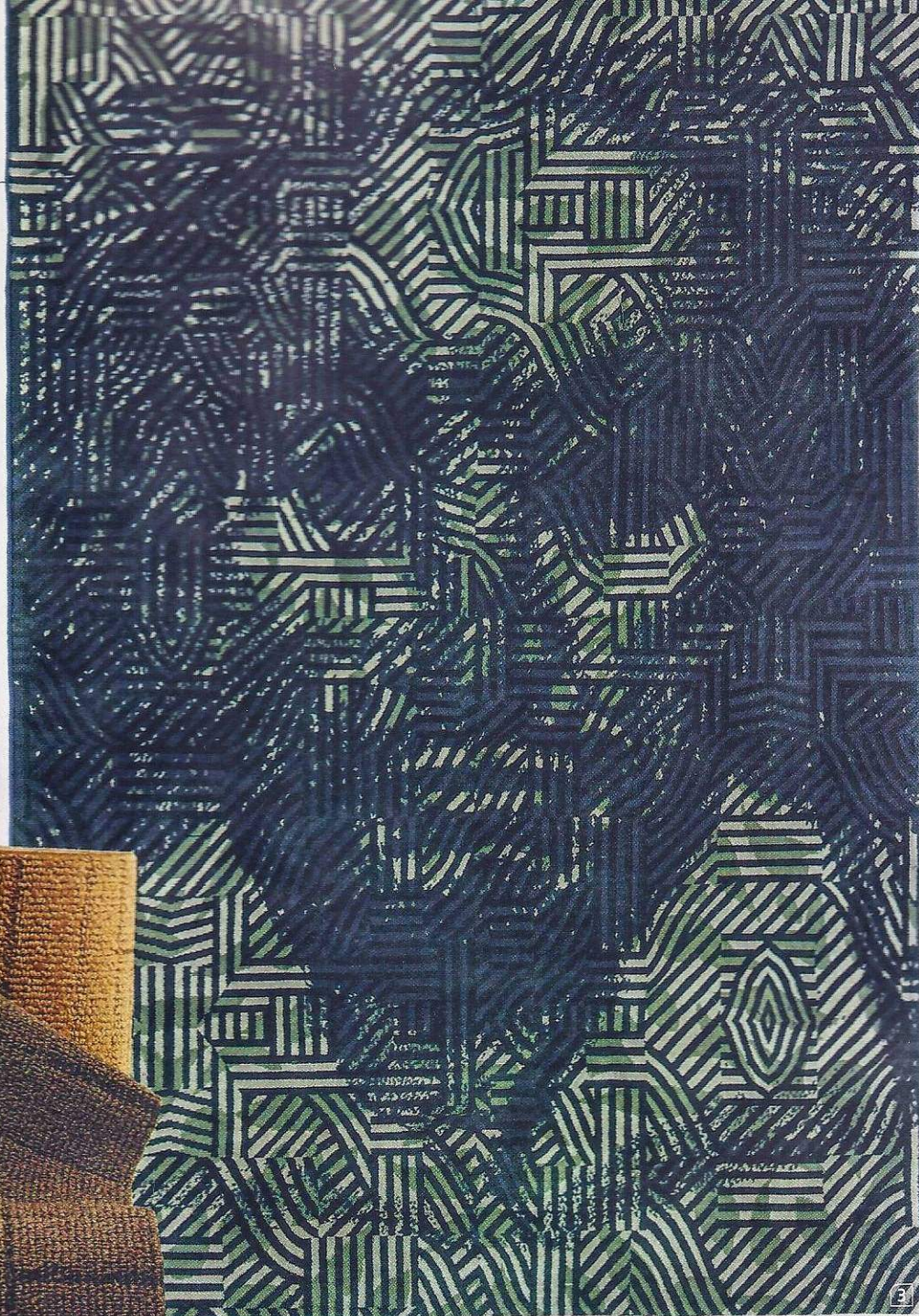


the gang's all here

Condensation on a cold windowpane. The intricate wiring of electric circuit boards. A postmodern mash-up of William Shakespeare and tribal Africa. Such eclectic inspirations fueled a host of designers teaming up with various manufacturers. Jonathan Adler applies his groovy vibe and bold color sense to deco-esque prints for the Rug Company, *Interior Design* Hall of Famers Bunny Williams and Clodagh collaborate with Doris Leslie Blau and Bentley, respectively, and graphics legend Milton Glaser joins Nanimarquina for the aforementioned culture clash with the Bard. Materials even go high-touch: Witness Geoffrey Bradfield's tactile hair-on hide.



1. Layla rug in hair-on-hide in blue by Kyle Bunting. **circle 403**
 2. Transistor rug in wool-silk in gray and white by Barberini & Gunnell. **circle 404**
 3. Shakespeare in Africa rug in wool by Nanimarquina. **circle 405**
 4. Monolith broadloom in nylon by Bentley. **circle 406**
 5. Harlequin rug hand-knotted in wool in Multi by the Rug Company. **circle 407**
 6. Sundance Stripe flat-woven in wool by Doris Leslie Blau. **circle 408**
 7. Trickle rug in a wool-silk blend in light brown, white, and silver by Tania Johnson Design. **circle 409**
- See page 76 for sources. ➔



1. GEOFFREY BRADFIELD



2. FRANCESCO BARBERINI,
NINA ALEXANDRA GUNNELL



3. MILTON GLASER



4. CLODAGH



5. JONATHAN ADLER



6. BUNNY WILLIAMS



7. TANIA JOHNSON